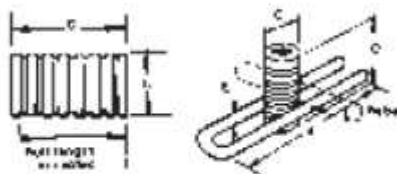


FERRULE INSERTS



PLAIN FERRULE INSERT

N.C. Bolt Dia.	Threads per Inch	Bolt Length Accepted	C	D	Price
1/4"	20	3/4"	3/16"	1 1/4"	323.00
3/8"	16	3/4"	3/16"	1 1/4"	327.00
1/2"	13	1"	1/8"	1 3/8"	402.00
5/8"	11	1 1/8"	7/16"	1 3/4"	623.00
3/4"	10	1 1/2"	1"	1 3/4"	762.00
1"	8	1 3/4"	1 1/8"	1 3/4"	1,331.00
1 1/4"	7	1 3/4"	1 1/8"	2 1/2"	3,838.00



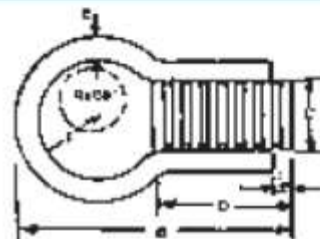
Safe working load at 4.0 to 1.0 safety factor

FERRULE THIN SLAB INSERT

N.C. Bolt Dia.	Dimensions			Safe Load Tension*	Concrete Strength P.S.I.	Price
	C	D	E			
1/4"	3/16"	1 1/4"	.225	300 lbs.	2,000	725.00
3/8"	3/16"	1 1/4"	.225	300 lbs.	2,000	800.00
1/2"	1/16"	1 3/8"	.225	500 lbs.	2,000	873.00
5/8"	7/16"	1 3/8"	.306	750 lbs.	2,000	1,055.00
3/4"	1"	1 3/8"	.306	750 lbs.	2,000	1,174.00
1"	1 3/8"	1 3/8"	.306	750 lbs.	2,000	1,962.00

FERRULE ROUND LOOP INSERT

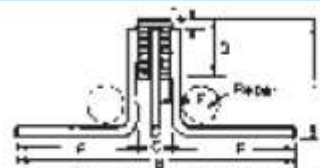
N.C. Bolt Dia.	Dimensions					Safe Load Tension*	Concrete Strength P.S.I.	Ultimate Mechanical Strength	Price
	B	C	D	E	F				
1/4"	2 3/4"	3/4"	1 1/4"	.243	1/2"	500 lbs.	2,000	3,000 lbs.	589.00
3/8"	2 3/4"	3/4"	1 1/4"	.243	1/2"	1,000 lbs.	2,000	3,000 lbs.	640.00
1/2"	2 3/4"	1 1/8"	1 3/8"	.243	1/2"	1,300 lbs.	2,000	6,000 lbs.	694.00
5/8"	3 1/4"	7/8"	1 1/2"	.262	3/4"	1,700 lbs.	2,000	13,500 lbs.	909.00
3/4"	3 1/4"	1"	1 1/2"	.262	3/4"	1,700 lbs.	2,000	13,500 lbs.	1,011.00
1"	6"	1 1/8"	1 1/2"	.262	1 1/4"	2,600 lbs.	2,000	13,500 lbs.	2,592.00



Safe working load at 4.0 to 1.0 safety factor

FERRULE SPIDER INSERT

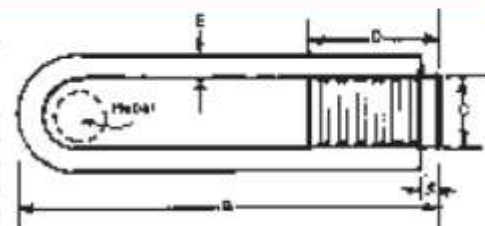
N.C. Bolt Dia.	Dimensions					Safe Load Tension*	Concrete Strength P.S.I.	Ultimate Mechanical Strength	Price
	B	C	D	E	F				
3/4"	7 1/8"	1"	1 1/8"	.306	3"	2,250 lbs.	2,000	27,000 lbs.	1,883.00
1"	9 1/8"	1 1/8"	1 1/8"	.306	4"	3,000 lbs.	2,000	27,000 lbs.	2,697.00



Safe working load at 4.0 to 1.0 safety factor

FERRULE LOOP INSERT

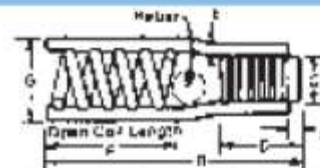
N.C. Bolt Dia.	Nominal Length	Dimensions				Safe Load Tension*	Concrete Strength P.S.I.	Ultimate Mechanical Strength	Price
		B	C	D	E				
1/2"	4"	4 1/8"	1 1/8"	1 3/8"	.225	2,250 lbs.	2,000	9,000 lbs.	783.00
1/2"	6"	6 1/8"	1 1/8"	1 3/8"	.225	2,250 lbs.	2,000	9,000 lbs.	801.00
3/4"	6"	6 1/8"	1"	1 3/8"	.306	3,750 lbs.	2,000	13,500 lbs.	1,080.00
3/4"	8"	8 1/8"	1"	1 3/8"	.306	3,750 lbs.	2,000	13,500 lbs.	1,157.00
1"	6"	6 1/8"	1 1/8"	1 3/8"	.375	4,500 lbs.	2,000	18,000 lbs.	1,901.00
1"	8"	8 1/8"	1 1/8"	1 3/8"	.375	4,500 lbs.	2,000	18,000 lbs.	1,980.00



Safe working load at 4.0 to 1.0 safety factor

FERRULE PLUS OPEN COIL INSERT

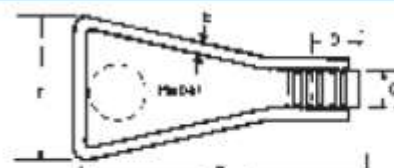
N.C. Bolt Dia.	Nominal Length	Dimensions					Safe Load Tension*	Concrete Strength P.S.I.	Ultimate Mechanical Strength	Price	
		B	C	D	E	F					G
3/4"	4 1/2"	4 1/2"	1"	1 1/8"	.375	2 1/2"	1 7/8"	4,500 lbs.	2,000	18,000 lbs.	1,591.00
1"	5 1/2"	5 1/2"	1 1/8"	1 1/8"	.440	2 1/4"	2 1/8"	6,000 lbs.	2,000	24,000 lbs.	2,878.00
1 1/4"	7 1/2"	7 1/2"	1 1/8"	2 1/2"	.440	3"	2 3/4"	13,500 lbs.	2,000	54,000 lbs.	7,086.00



Safe working load at 4.0 to 1.0 safety factor

SINGLE FLARED FERRULE LOOP INSERT

N.C. Bolt Dia.	Nominal Length	Dimensions					Safe Load Tension*	Concrete Strength P.S.I.	Ultimate Mechanical Strength	Price
		B	C	D	E	Approx. F				
1/2"	4"	4 1/8"	1 1/8"	1 3/8"	.225	3"	2,250 lbs.	2,000	9,000 lbs.	684.00
1/2"	6"	6 1/8"	1 1/8"	1 3/8"	.225	3 1/2"	2,250 lbs.	2,000	9,000 lbs.	909.00
3/4"	6"	6 1/8"	1"	1 3/8"	.306	4 1/2"	3,750 lbs.	2,000	13,500 lbs.	1,020.00
3/4"	9"	9 1/8"	1"	1 3/8"	.306	5 1/2"	3,750 lbs.	2,000	13,500 lbs.	1,115.00



Safe working load at 4.0 to 1.0 safety factor

DOUBLE FLARED FERRULE LOOP INSERT

N.C. Bolt Dia.	Nominal Length	Dimensions					Safe Load Tension*	Concrete Strength P.S.I.	Ultimate Mechanical Strength	Price	
		B	C	D	E	Approx. F					Approx. G
3/4"	9"	9 1/8"	1"	1 1/8"	.375	5 1/2"	5 1/2"	9,000 lbs.	2,000	36,000 lbs.	3,120.00
1"	12"	12 1/8"	1 1/8"	1 1/8"	.375	5 3/4"	5 3/4"	9,000 lbs.	2,000	36,000 lbs.	3,760.00

Safe working load 4.0 to 1.0 safety factor.

Note: Wherever possible insert should be captured with reinforcing steel.

