

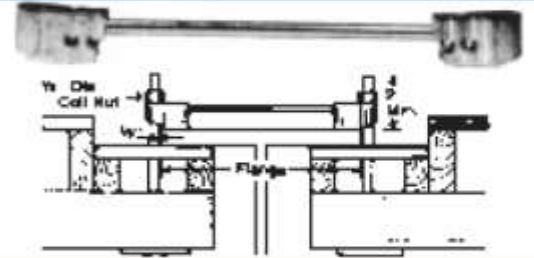
# STEEL BEAM HANGERS



## STEEL BEAM HANGER

**7,000 LBS. (3,500 LBS. Per Leg)** at 2.0 to 1.0 safety factor.

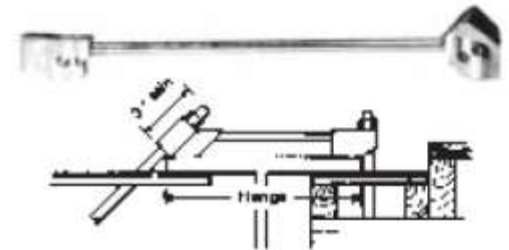
Flange width	Price	Wt. lbs.
Up to 8"	1,000.00	62
ea. add'l. inch add	26.00	3
*1/2" dia. coil nuts not included.		
Two coil nuts required per hanger	168.00	7



## STEEL BEAM ANGLE HANGER

**7,000 LBS. (3,500 LBS. Per Leg)** at 2.0 to 1.0 safety factor.

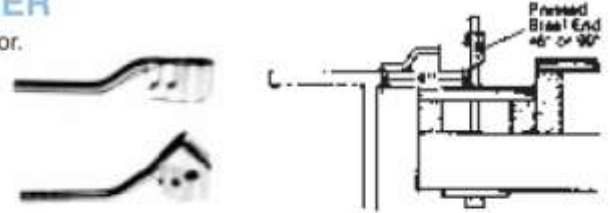
Flange width	Price	Wt. lbs.
Up to 8"	1,060.00	62
ea. add'l. inch add	26.00	3
*1/2" dia. coil nuts not included.		
Two coil nuts required per hanger	168.00	7



## HALF STEEL BEAM HANGER & ANGLE HANGER

**3,500 LBS. (Dependent Upon Field Weld)** at 2.0 to 1.0 safety factor.

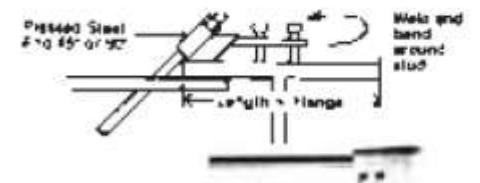
Angle	Wire Dia.	Length	Price	Wt. lbs.
90°	.375	6"	750.00	35
45°	.375	6"	830.00	35
*1/2" dia. Coil nut not included				
One coil nut required per hanger			168.00	7



## WELDING HALF STEEL BEAM HANGER & ANGLE HANGER

**3,500 LBS. (Dependent Upon Field Weld)** at 2.0 to 1.0 safety factor.

Dia. x length	Price	Wt. lbs.
1/2" x 12"	1,025.00	42
1/2" x 14"	1,069.00	46
1/2" x 16"	1,113.00	50
ea. add'l. inch add for 45° angle add	22.00	6
One coil nut required per hanger		168.00
		7

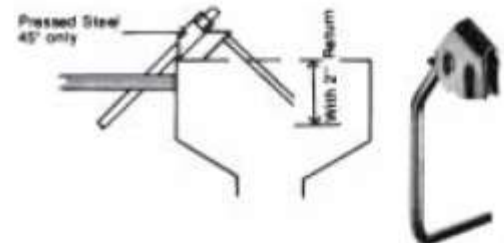


\*1/2" dia coil nut not included.

## STEEL ANCHOR HANGER

**3,500 LBS. (On 45° End)** at 2.0 to 1.0 safety factor.

Price	Wt. lbs.
2,575.00	62



## STEEL BEAM TIE-BACK HANGER (Heavy Duty 12,000 # SWL @ 2.0-1.0)

Flange width	SWL @ 2.0-1.0	Price	Wt. lbs.
Up to 12"	6,000# on the 45°	6,740.00	74
ea. add'l. inch add		74.00	4
*1/2" dia. coil nuts not included			168.00
Two coil nuts required per hanger			168.00
<b>PLATED COIL HOOK BOLTS</b>			
Dia. x length			Wt. lbs.
1/2" x 5"		700.00	38
ea. add'l. inch add		32.00	5

