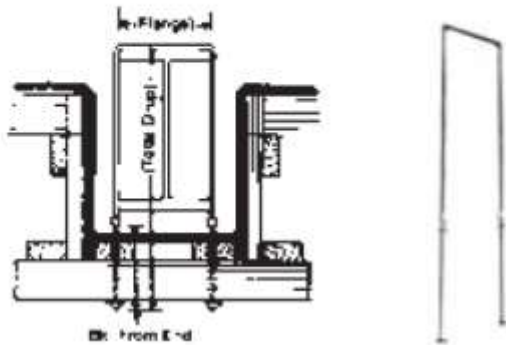


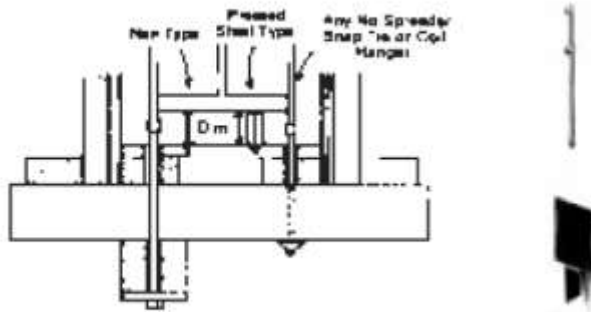
## SNAP TIE HANGER WITH SPREADER (PC) (FW)

Total SWL both sides @ 2.0-1.0 (Drop + Flange + Drop)	1,500#		2,000#	
	Price	Wt. lbs.	Price	Wt. lbs.
Overall to 30"	1,115.00	31	1,270.00	38
ea. add'l. inch add	17.00	2	17.00	3



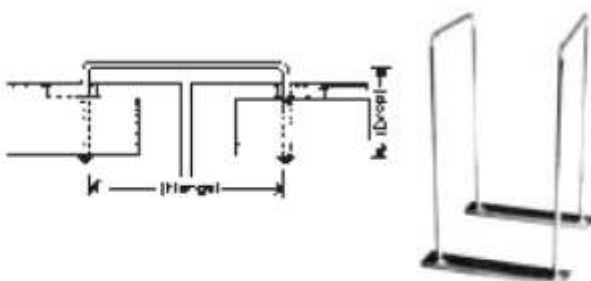
## SNAP TIE HANGER NO SPREADER (NB)

Total SWL both sides @ 2.0-1.0 (Drop + Flange + Drop)	1,500#		2,000#	
	Price	Wt. lbs.	Price	Wt. lbs.
Overall to 30"	1,115.00	31	1,270.00	31
ea. add'l. inch add	17.00	2	17.00	3



## SOFFIT SPACERS NAIL OR PRESSED STEEL

Size	Price	Wt. lbs.
1 1/2"	112.00	4
2"	125.00	5
2 1/2"	138.00	7
3"	151.00	8



## SADDLE HANGER WITH PLATE

**Four Gauge 1,800 LBS. (900 LBS. Per Side Equally Loaded)** Safe working load at 2.0 to 1.0 safety factor.

(Drop + Flange + Drop)	Price	Wt. lbs.
2 x joist overall to 18" (4 ga. wire)	1,306.00	45
ea. add'l. inch add	36.00	2
4 x joist add	74.00	4
diff. plate ea. end add	132.00	
diff. drop ea. end add	220.00	