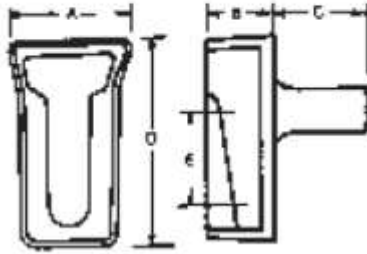




MALLEABLE CAST INSERTS



SHELF ANGLE INSERT*



LONG SHELF ANGLE INSERT*



EXAMPLE

N.C. Bolt Dia.	Dimensions					Price	Wt. lbs.
	A	B	C	D	E		
5/8"	2 1/16	1 1/32	1 15/16	3 3/8	1 3/8	2,400.00	100
3/4"	2 5/16	1 3/16	2 1/2	3 7/8	1 3/4	2,600.00	108
3/4" L	2 5/16	1 1/4	2 3/8	5 1/2	3	4,800.00	229



ASKEW HEAD BOLT*

Diameter Length	5/8"		3/4"	
	Price	Wt. lbs.	Price	Wt. lbs.
1 1/2"	1,100.00	22	1,253.00	25
2"	1,200.00	28	1,365.00	31
2 1/2"	1,350.00	34	1,504.00	37
3"	1,450.00	40	2,489.00	43

*All N.C. Threaded



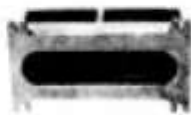
ROUND WASHER

Round Washer	168.00	8	168.00	10
--------------	--------	---	--------	----



SQUARE NUT*

Square Nut	480.00	10	513.00	12
------------	--------	----	--------	----

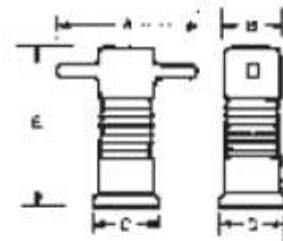


ADJUSTABLE INSERT*

Price	Wt. lbs.
3,993.00	180

N.C. Bolt Dia.	Dimensions					Price	Wt. lbs.
	A	B	C	D	E		
1/2"	2 3/4	3/8	1 1/8	1 3/4	2 1/2	2,116.00	35
5/8"	3	1 1/8	1 3/8	2	3 1/2	2,153.00	60
3/4"	3	1 1/8	1 3/8	2	3 1/2	2,308.00	60
7/8"	3 1/2	1 3/8	1 1/2	2 1/2	3	2,946.00	90
1"	3 1/2	1 3/8	1 1/2	2 1/2	3	3,120.00	90

THREADED INSERT*



***NOTE:** Recommended working load for all bolts used as permanent structural connections is based on AISC Specification 1.5.2. All bolts used in bearing type connections with an applied shear load shall have a working load based on 10,000 PSI on the root area of the threaded portion: 5/8" diameter bolts = 2,020 LBS., 3/4" diameter bolts = 3,020 LBS.