

## Length compensation

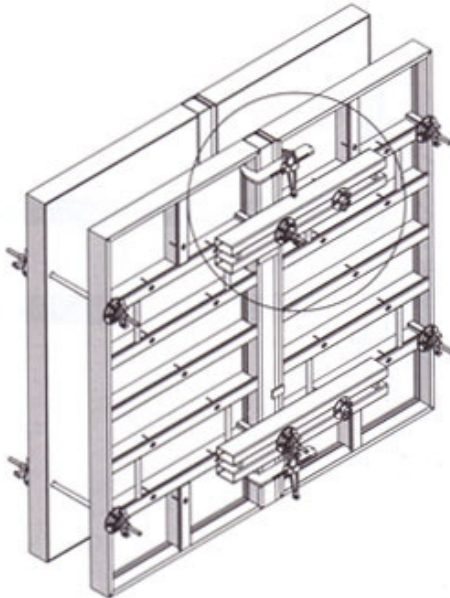


Fig. 23.1

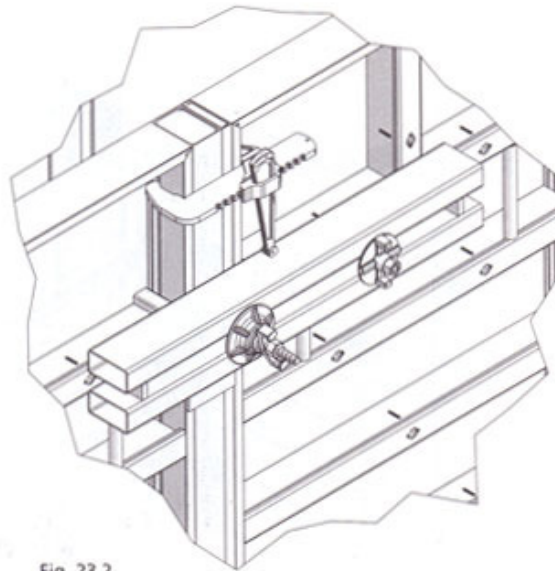


Fig. 23.2

Compensation areas are reinforced with steel rails, which must always be attached to the multi-function profile at tie hole elevation.

The maximum filler width (L) for applications with standard panels is 30" (the maximum pressure is 1,350 psf).

### Filler

Gaps up to 6" can be formed with 1", 2" and 3" fillers plus additional washers or steel rails (Fig. 23.1 - Fig. 23.3).

1" fillers need an additional rail, since it is not possible to tie through the filler. 2" and 3" fillers need no additional hardware since it is possible to tie through.

### Please note

When compensating length differences near outside corners or bulkheads, the horizontal tensile force must always be considered. In this case, fasten the steel rail with flange screws on both sides of the compensation area.

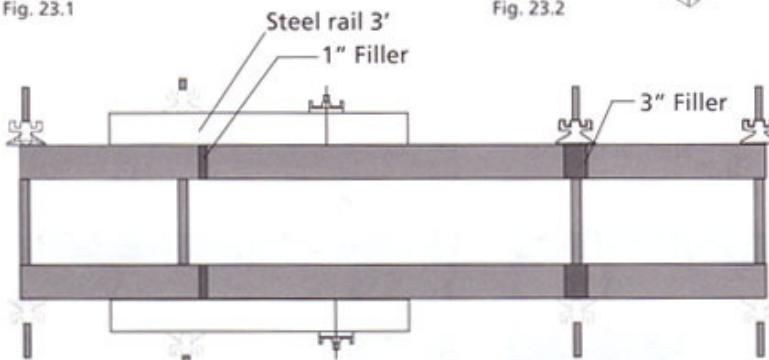


Fig. 23.3

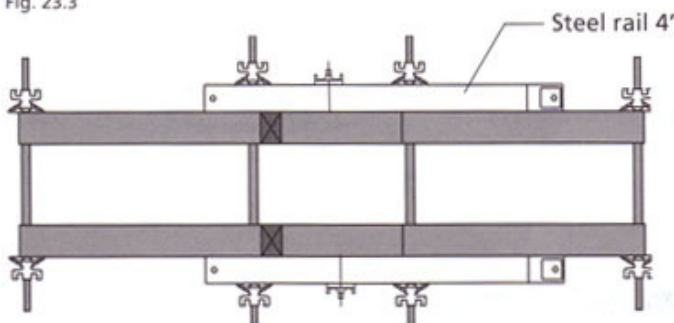


Fig. 23.4

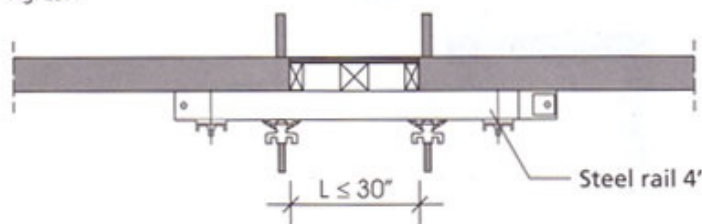


Fig. 23.5

Description	Ref.-No.
Uni-assembly lock 22 .....	29-400-85