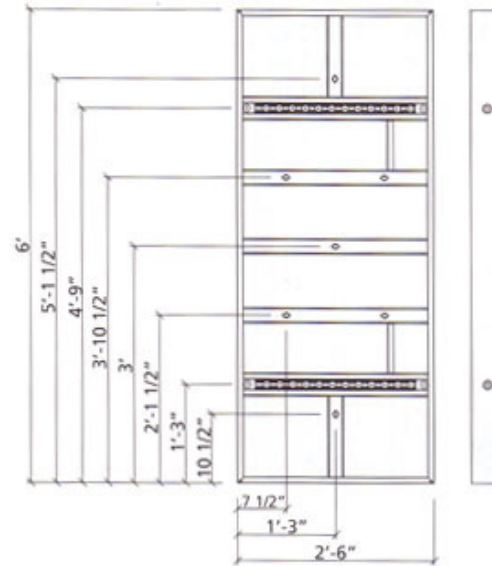
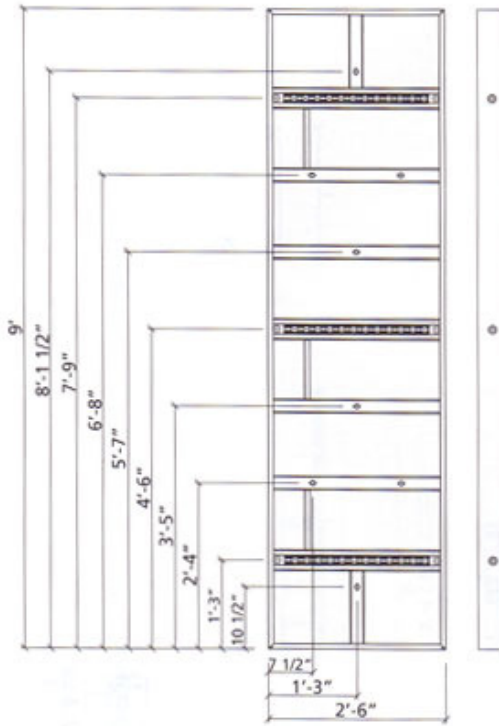


## ML-multi-purpose panel



The multi-purpose panel can be used to form pilasters, corners, columns, bridge abutments and connections to existing walls. The panels have multi-adjustment profiles for mounting column clamps or ties.

The multi-purpose panel can be used as a standard 2'-6" panel as the tie holes are not yet drilled. However, the panel comes with pilot holes predrilled on the backside of the panel for exact position of selected tie holes. For drilling this hole a 1" size bit is required.

Another possibility to connect two multi-purpose panels with each other is to use the ML-tensioning screw.

