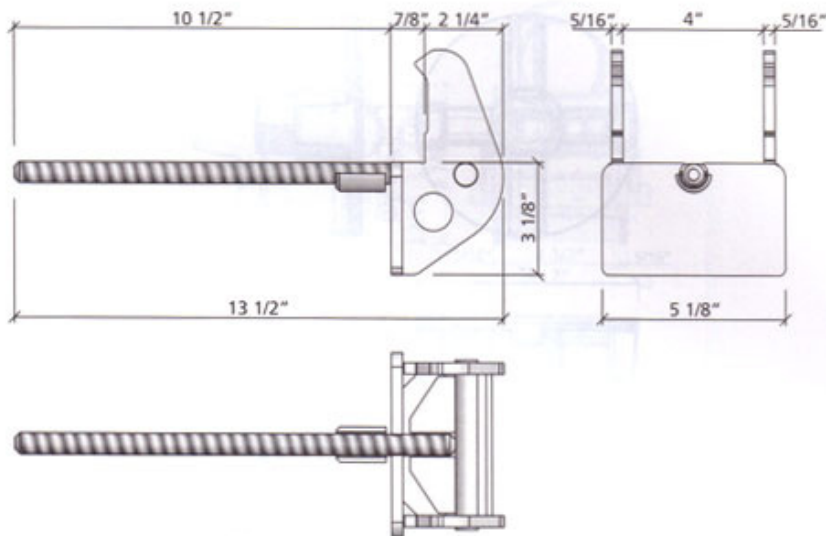
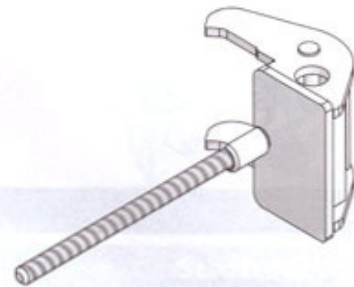


### ML-column clamp

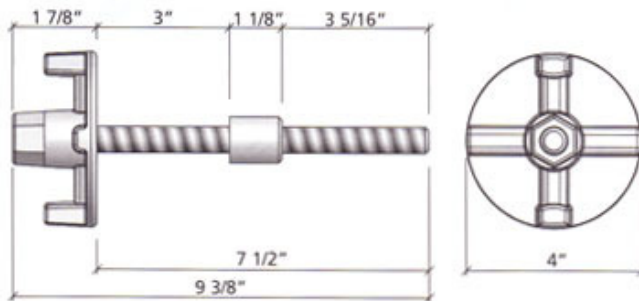


galvanized; permits connection of panels at an angle of 90°. To form bulkheads and columns in combination with ML-multi-purpose panels; needs one articulated flange nut 120 or flange nut 100.

Ref.-No.	Dimensions	Weight
29-210-70	—	5.3 lb



### ML-tensioning screw



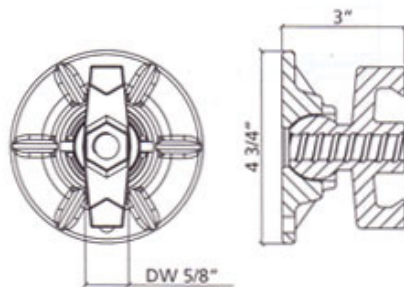
to connect two ML-multi-purpose panels at an angle of 90° with each other.

Ref.-No.	Dimensions	Weight
29-210-80	—	2.6 lb



### Articulated flange nut 15/120

forged part with cut thread, ball-and-socket joint; for threadbars with 5/8" (15 mm); admissible load-bearing capacity: 21,900 lbs.



Ref.-No.	Dimensions	Weight
29-900-10	—	4.0 lb

